



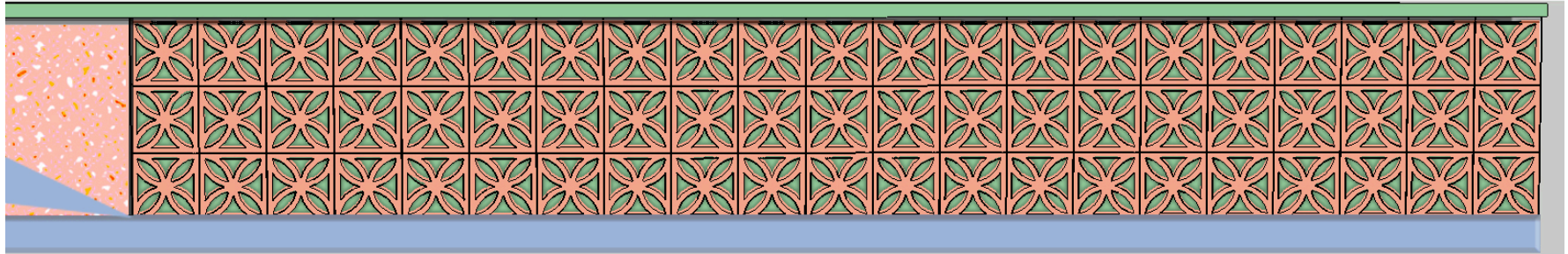
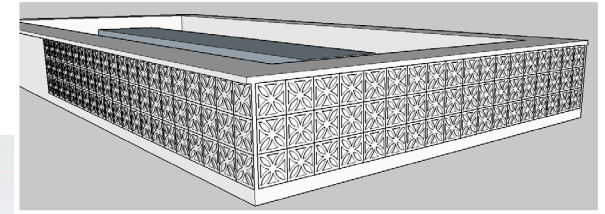
BAR FASCIA AND MATERIALS

Finish inspired by solid
Terrazzo tiles

- Printed dibond or
Terrazzo tile
- Blue decorative shapes,
Dibond, timber or
painted
- Decorative concrete
block tiles stacked and
painted as per Houston's
bar design

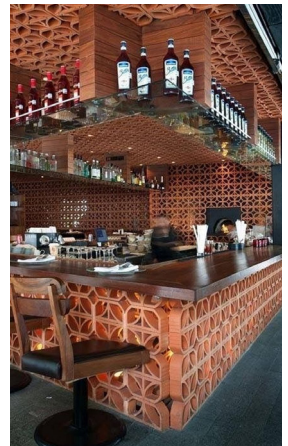
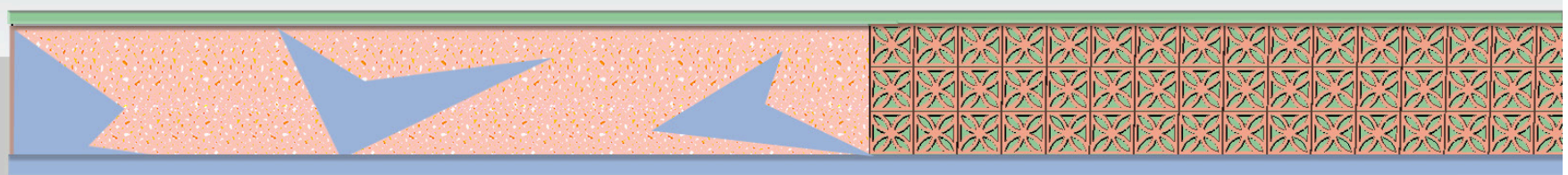
KITCHEN CORNER

A different finish for the kitchen area. With such a large
bar structure this will break it up



BAR FRONT

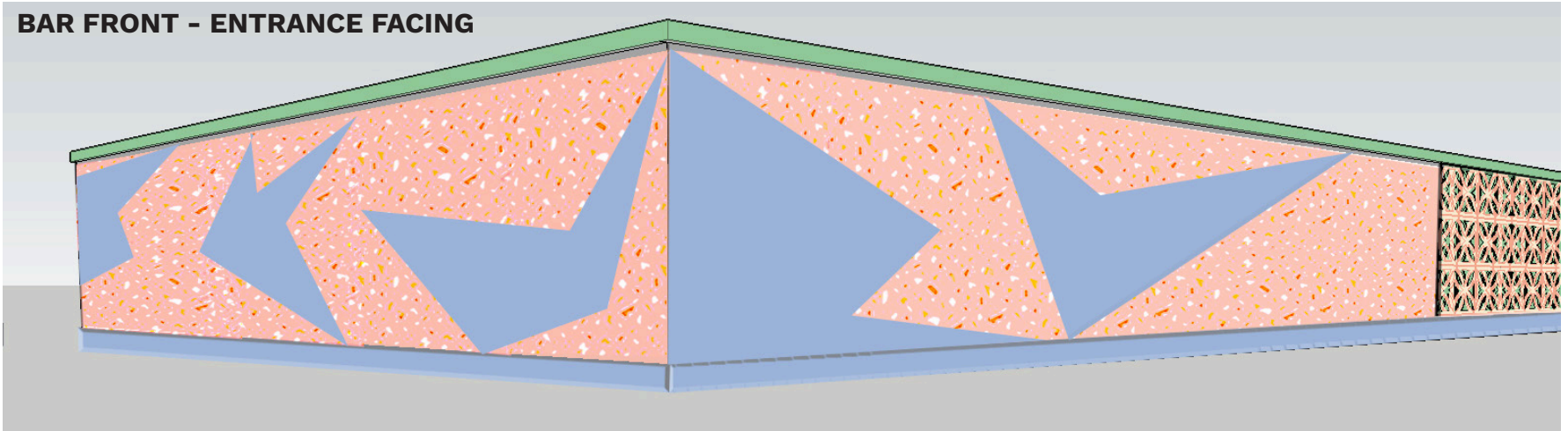
KITCHEN



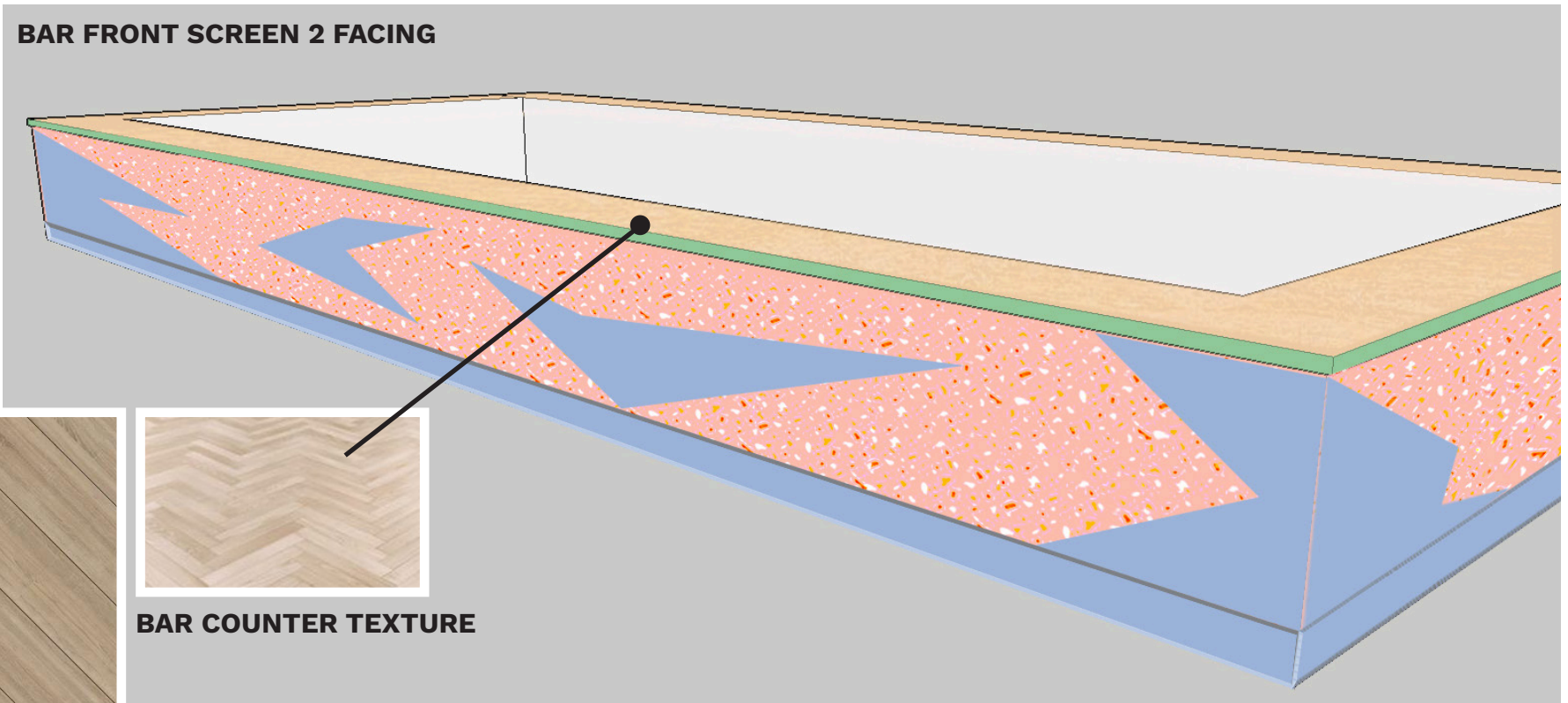
BAR COUNTER

- Beech coloured timber counter or HDPE
- Chevron or diagonal arrangement
- Bar trim in a green laminate or painted

BAR FRONT - ENTRANCE FACING



BAR FRONT SCREEN 2 FACING



BAR COUNTER TEXTURE

BACK BAR WALL AND "HELLO BABES" NEON AS SEEN AT MOST VENUES

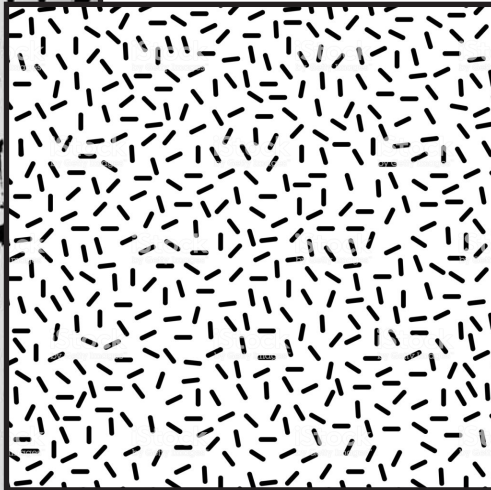
BACK BAR

- Back bar wall, timber structure and printed dibond or tiles

- Neon sign

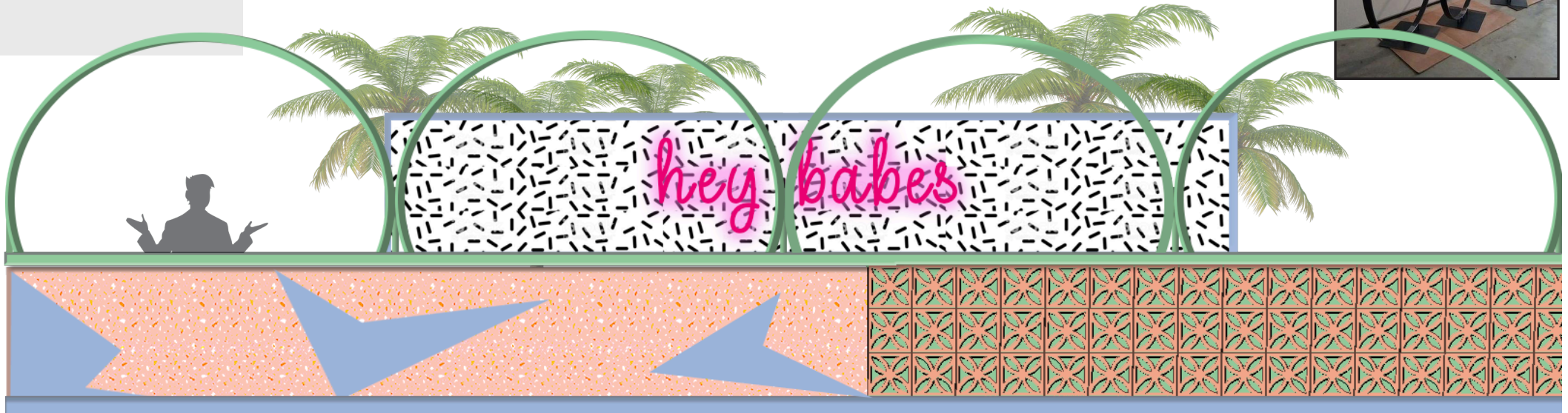
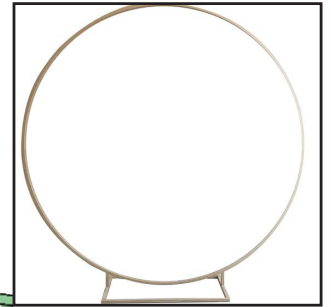
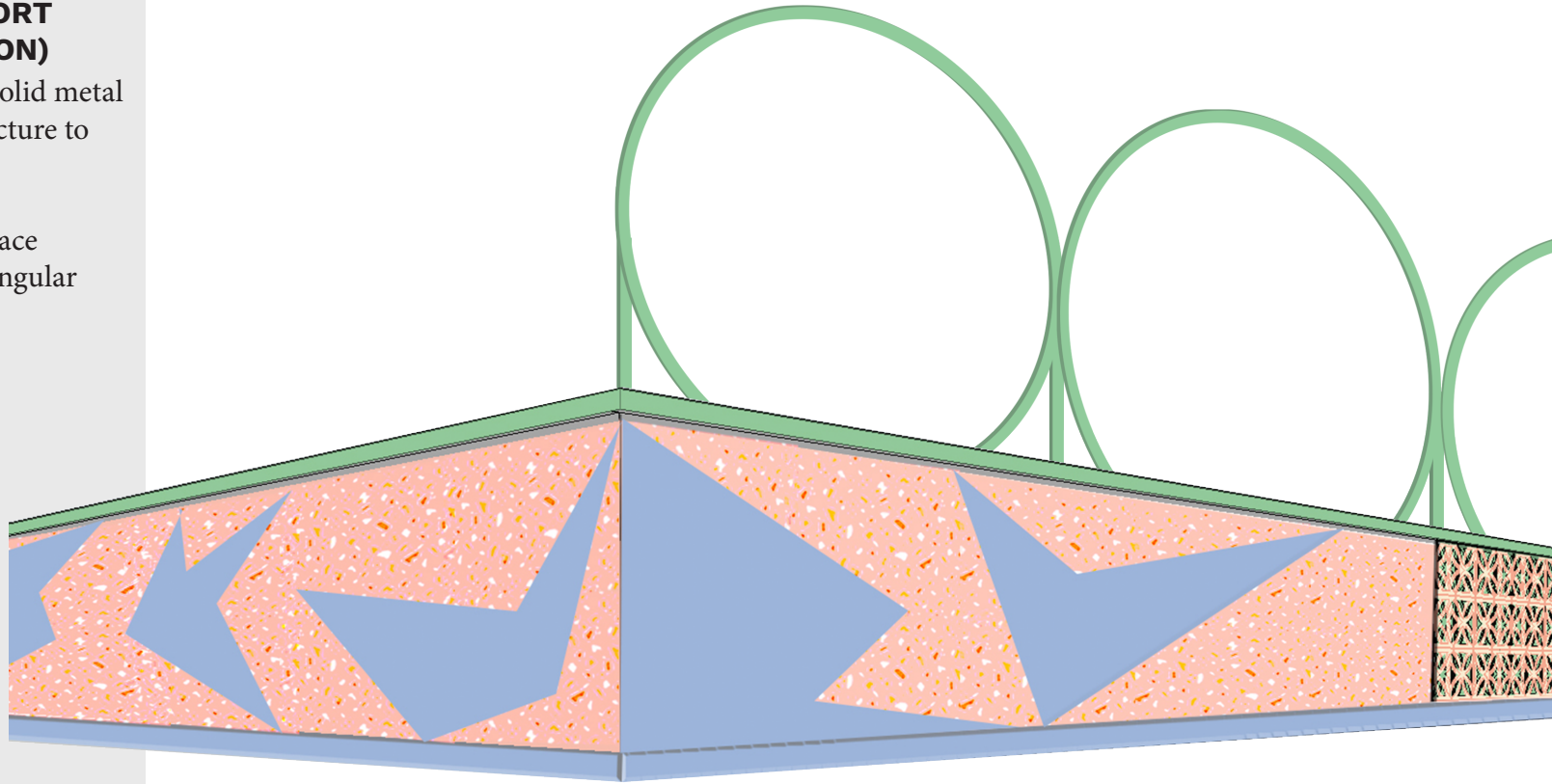


BLACK AND WHITE DASH PRINT - Printed Dibond or tiles



BAR PERGOLA SUPPORT (OPTION)

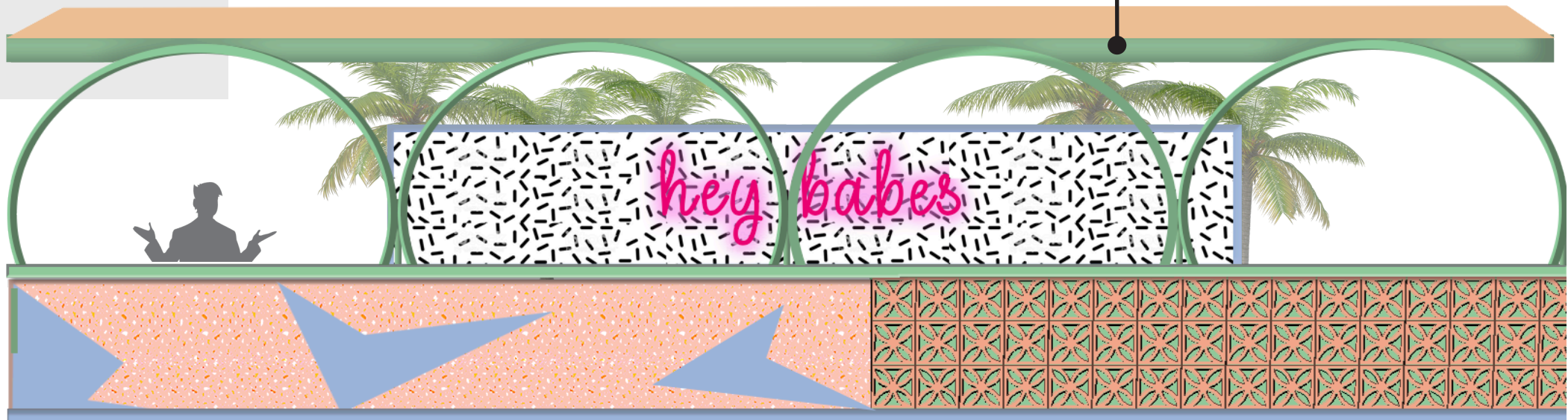
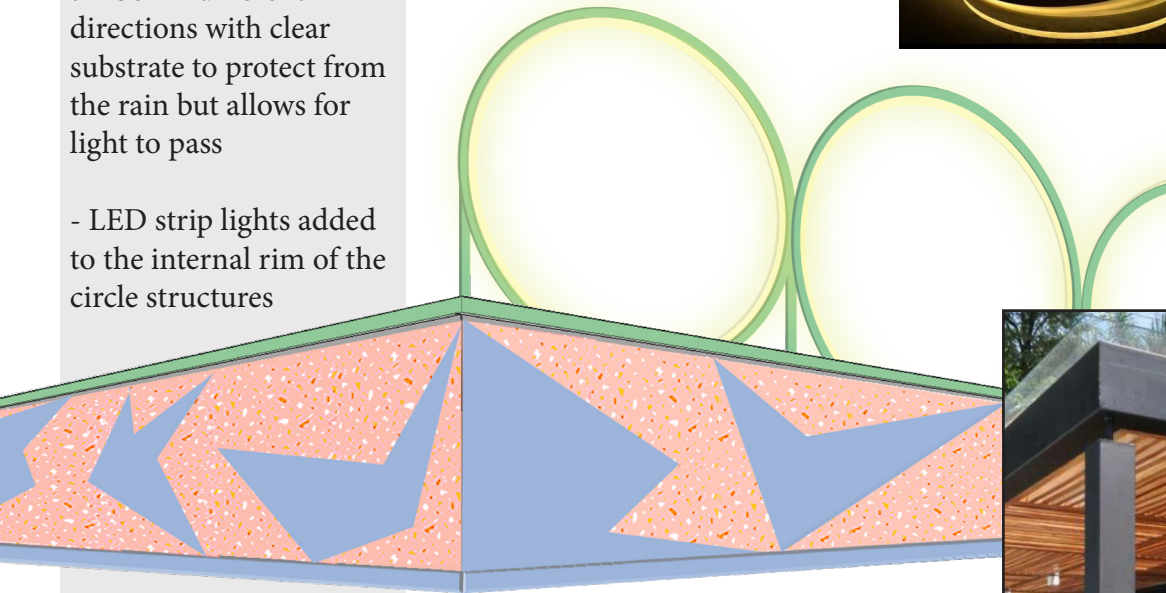
- Decorative solid metal steel loop structure to support roof
- Loop to replace standard rectangular uprights



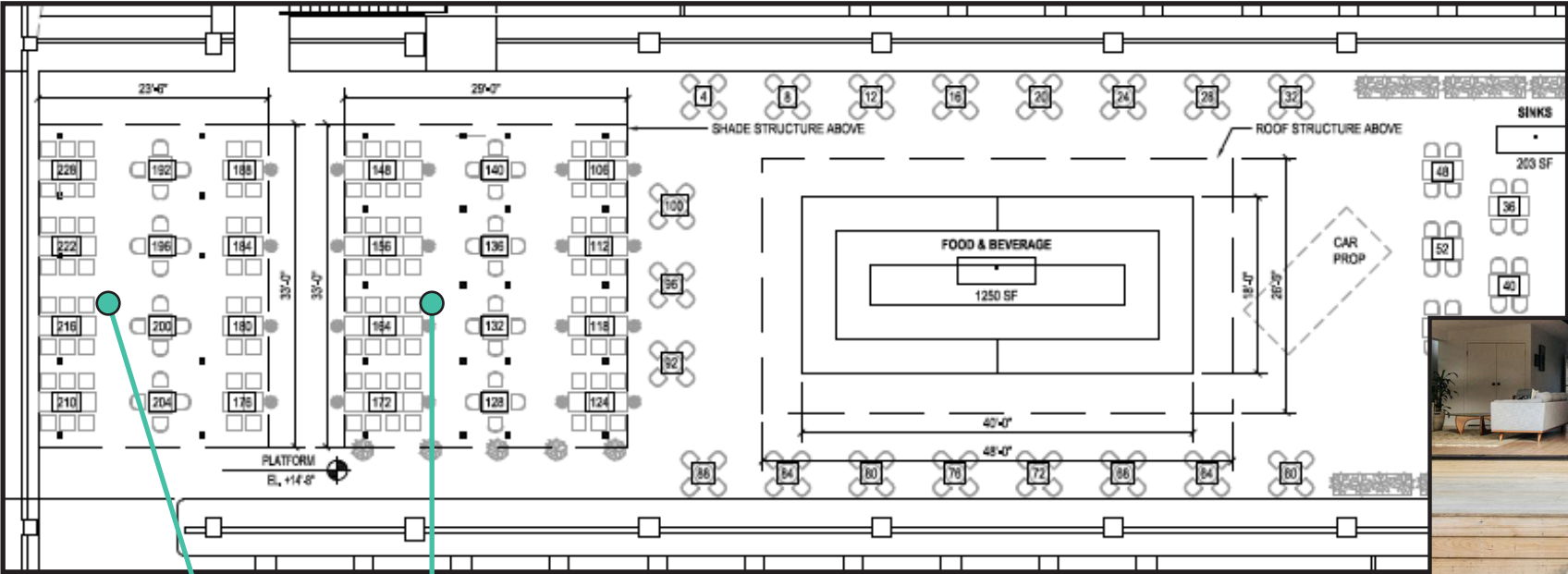
BAR PERGOLA ROOF

- Roof structure, slatted timber in different directions with clear substrate to protect from the rain but allows for light to pass

- LED strip lights added to the internal rim of the circle structures

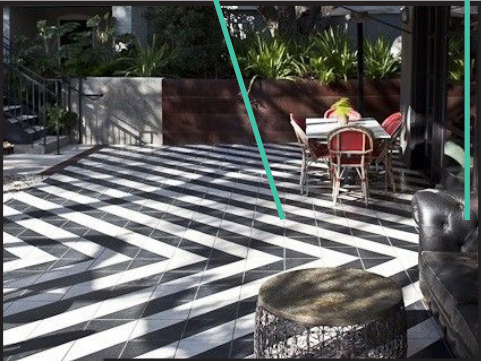


FLOORING (DRAFT OPTION)



BAR AREA
FLOORING

- Patterned floor tile or painted timber slats to finish the raised sheltered area. This will contrast with the lightly sanded timber flooring for the main bar areas



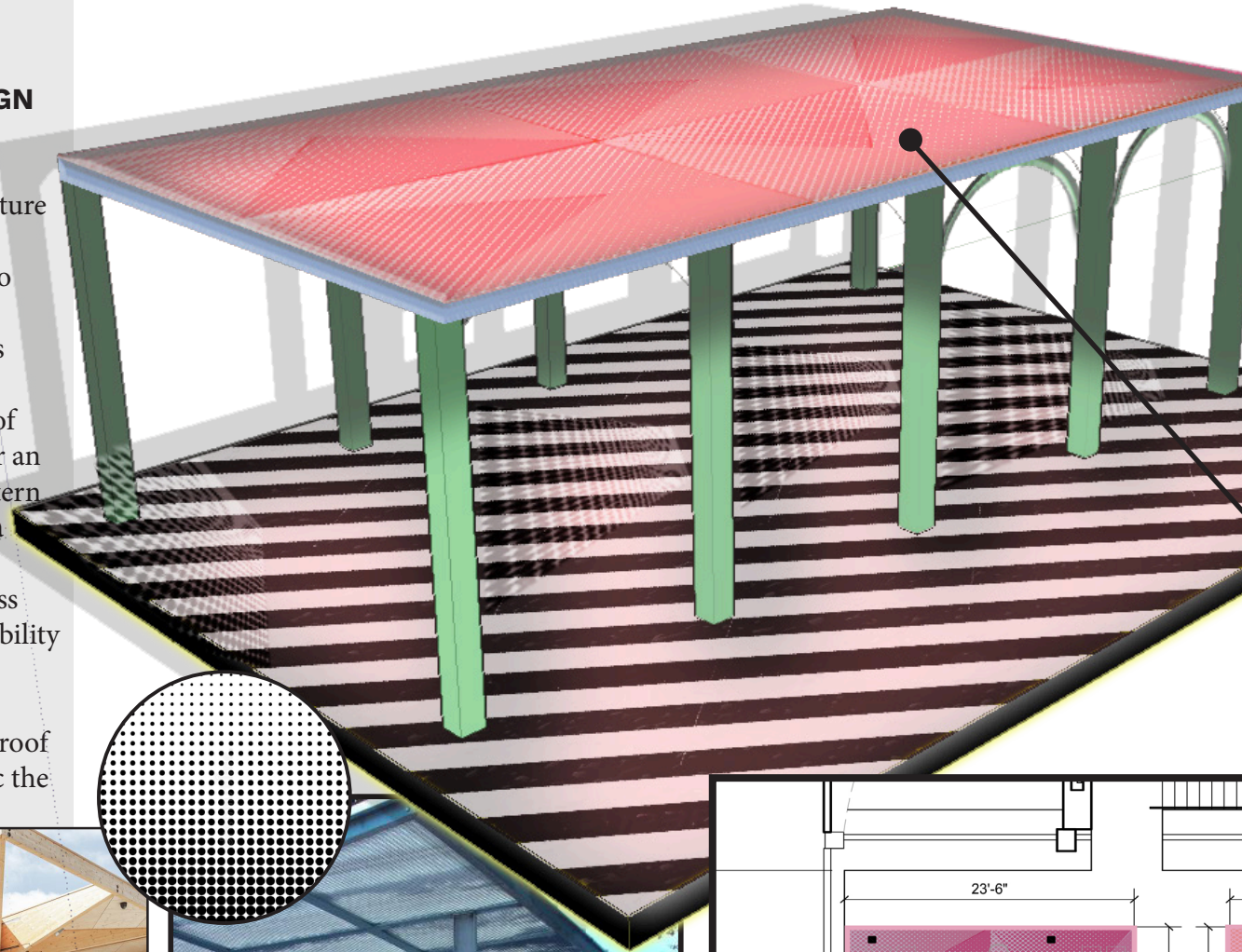
SHADE AND CANOPY DESIGN

- Perforated metal geometric panels to create the roof structure

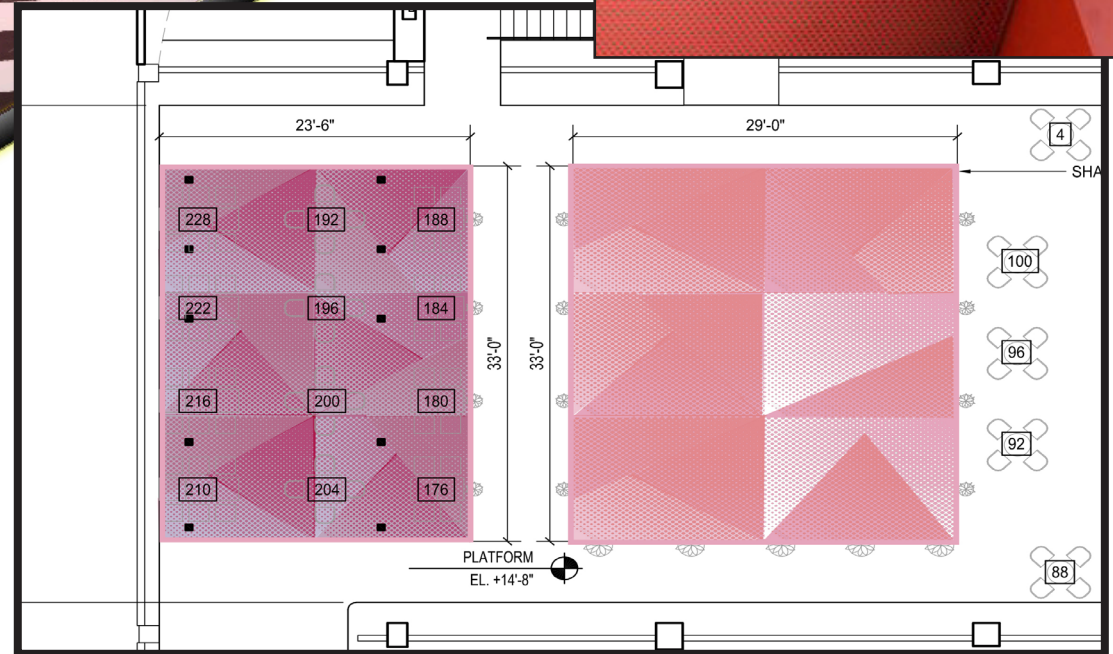
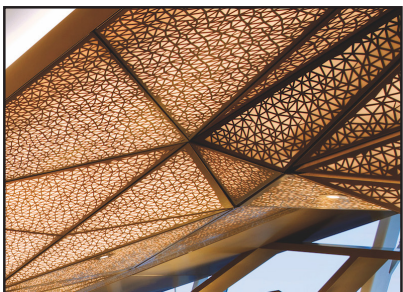
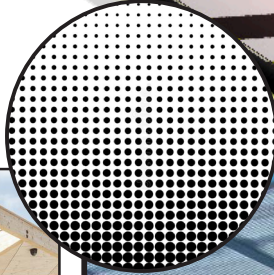
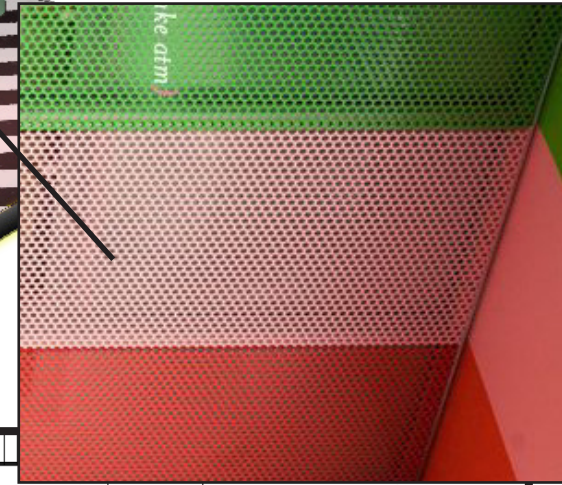
- Perforations fade to control the amount of light that can pass through. This will allow heavier areas of shade, but makes for an interesting light pattern over the seating area

- Powder coated gloss paint finish for durability and effect

- Arches to support roof structure and mimic the bar



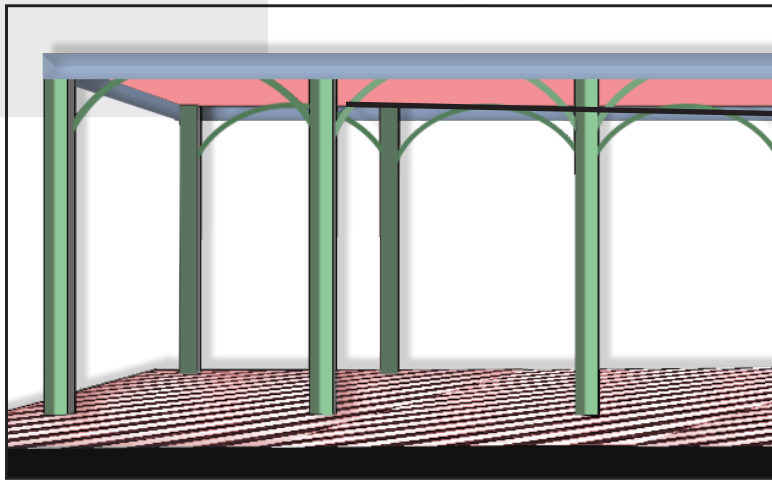
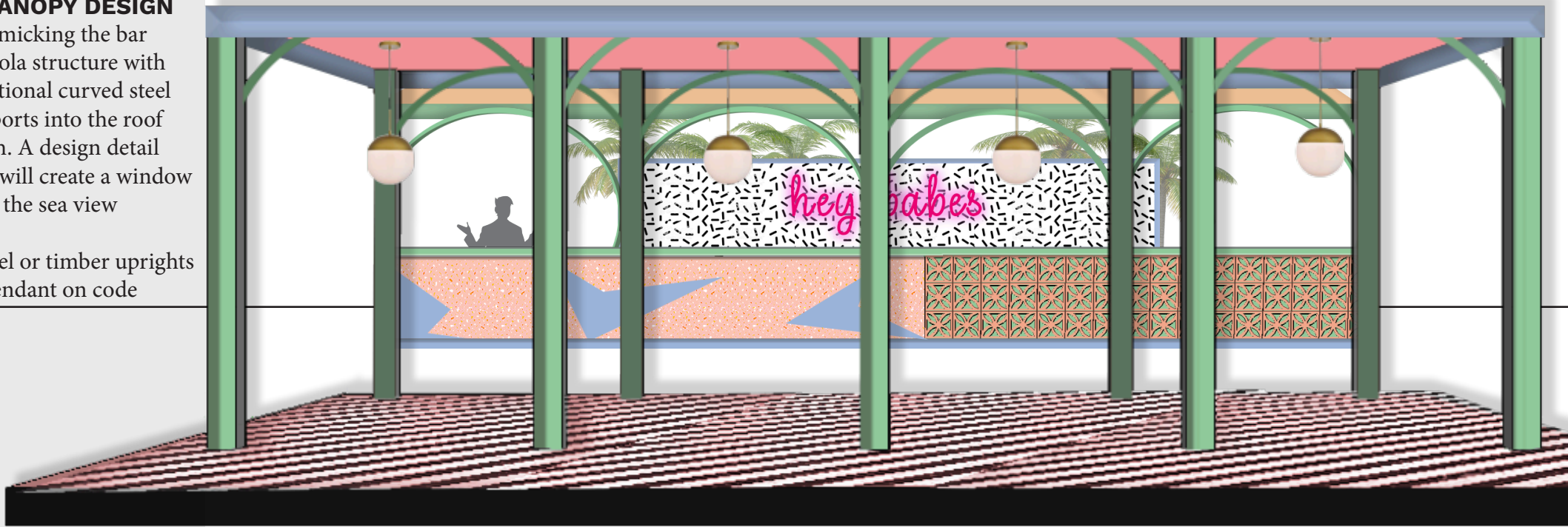
**CLEAR SUBSTRATE
OVER THE TOP OF
METAL TO PROTECT
FROM RAIN**



SHADE AND CANOPY DESIGN

- Mimicking the bar pergola structure with additional curved steel supports into the roof mesh. A design detail that will create a window over the sea view

- Steel or timber uprights dependant on code



RESTROOMS MODULAR PREFABRICATED

- Exterior of the modular units to be clad in Cambia timber with flat roof.

SIMPLE TIMBER CLADDING EXAMPLE OF WHAT "COULD" BE DONE



WOOD SIDING

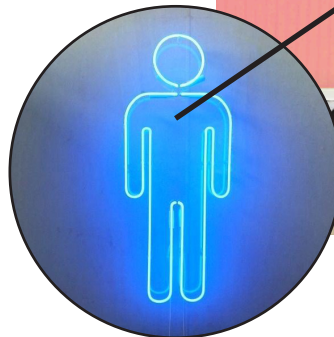
Wood modular siding is an option for prefab exterior walls. Cambia is a thermally modified wood, a sustainable lumber that performs better and is more cost-effective than other wood and wood substitutes. It is resistant to insect damage and fungal infestation, and less susceptible to warping due to humidity. Design-wise, this wood siding offers a beautiful colour that highlights the natural beauty of the wood grain. It can also be painted.

<https://vanguardmodular.com/blog/modular-siding-exterior-options/>



IDEA DEVELOPMENT

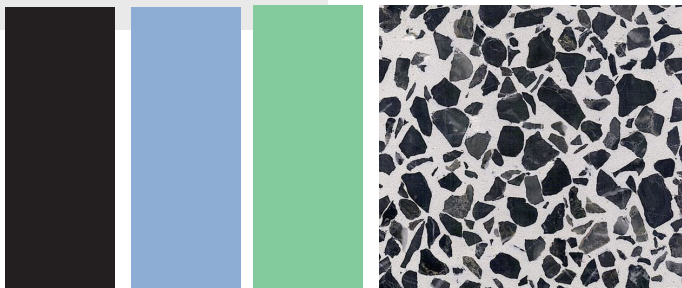
- REMOVE WINDOWS
- NEON OR LED SIGN TO THE EXTERIOR
- FOLIAGE OR DIBOND PRINT TO THE BASE OF THE UNIT



RESTROOMS

CUSTOM INTERIOR

- Plaster boards walls
- Painted ceiling
- Painted upper wall / printed wallpaper or dibond
- Ceramic tiles to lower section of the wall
- Round brass effect mirror
- Console sink
- Dome pendant lights and matching wall sconce
- Terrazzo style floor tile
- Potted foliage between basins

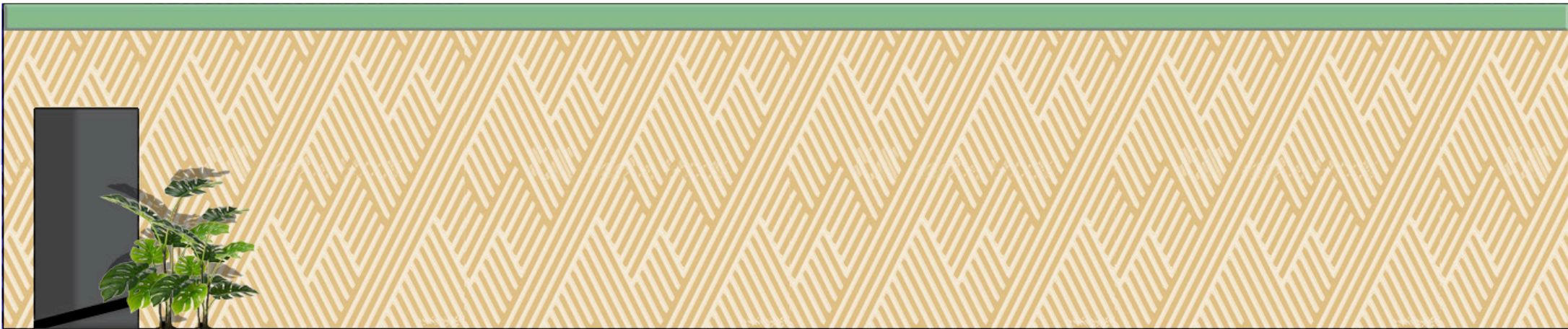


RESTROOMS CUSTOM EXTERIOR

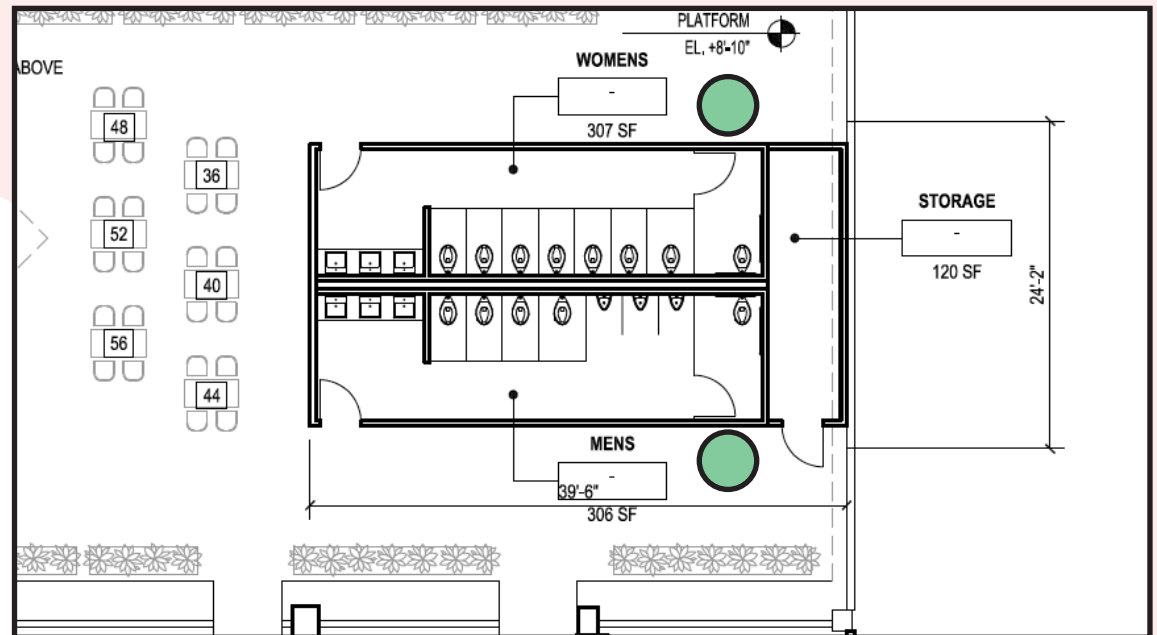
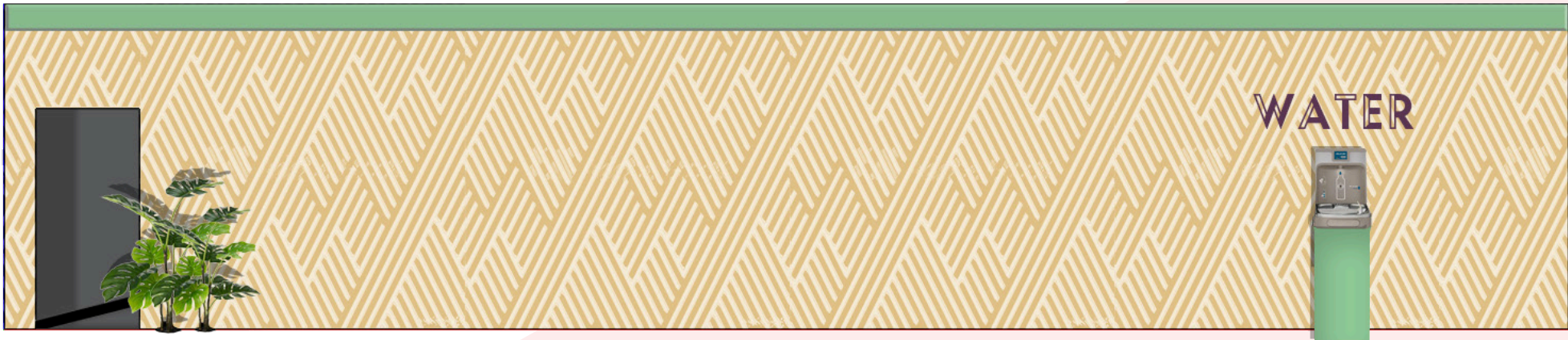
- Simple Ply cladding
- 2" x 1" timber pattern detail to mimic bar design
- Plants/Foliage used to dress
- LED or Neon WC signs



EXAMPLE



WATER FOUNTAINS



LOVE, PEACE & GREAT FILM

GATE & WALL DESIGN MAIN ENTRANCE

Art Deco architecture to inspire the design of the entrance wall.

- Using RCC brand colours
- Timber structure with wooden bead detailing finished in a paint
- RCC back-lit logo. PVC or dibond CNC cut
- Border detail across the top of the wall to hide LED strip light
- Gates, timber or steel sheets with CNC Art Deco border detail
- PVC or Dibond cut letters adhered to the gate 'LOVE, PEACE & GREAT FILM'



Colour 2

Colour 1

GATE & WALL DESIGN CINEMA

Art Deco architecture to inspire the design of the cinema entrances.

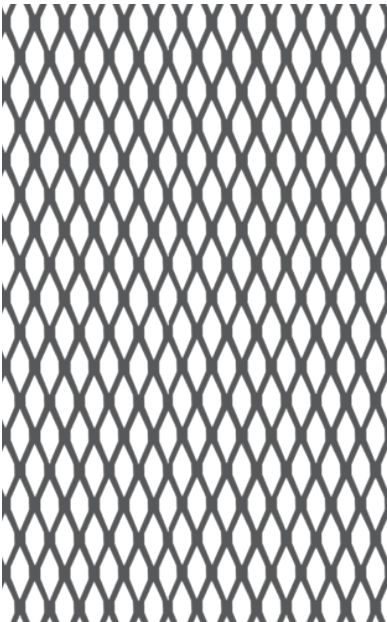
- Metal wire mesh fence panels to create the look of the doors adhered to the face of grey painted timber door

- 'Screen' text cut from PVC/dibond/vinyl

- Opal acrylic light-box symbols 'love, peace and great film'

- Wall structure created from steel beams and timber

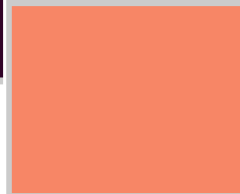
- Foliage to line the entrance way



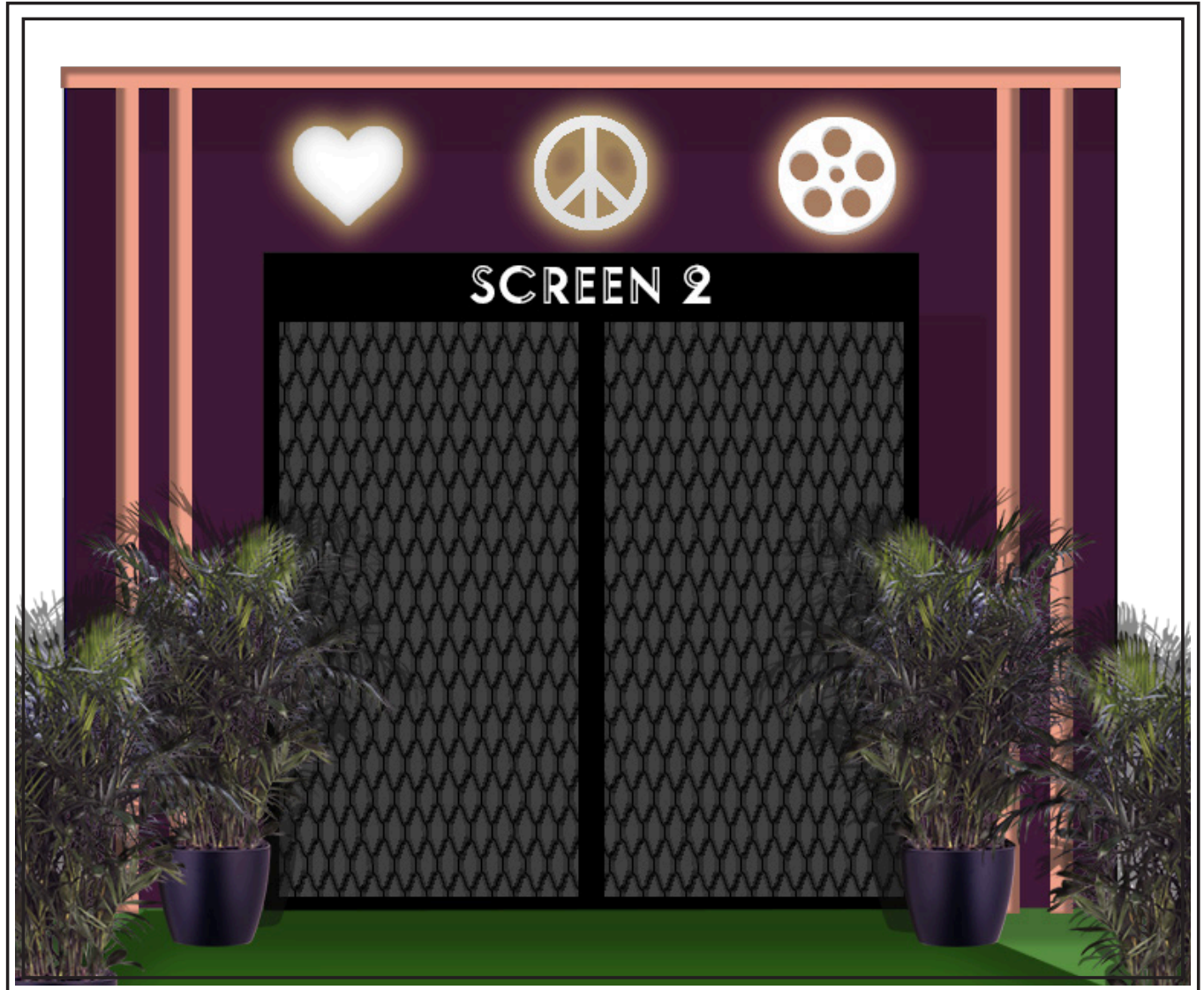
Colour 2



Colour 1

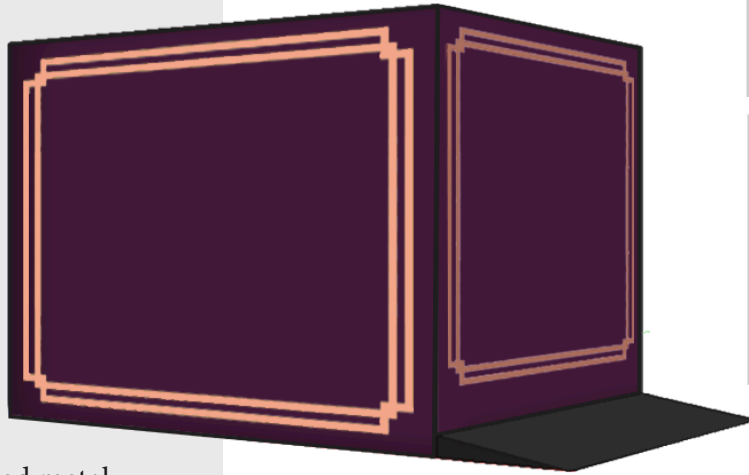


LOVE, PEACE & GREAT FILM



ADA LIFT CLADDING

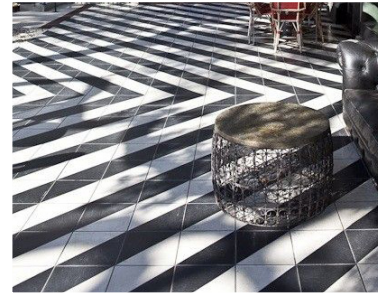
Art Deco inspired,
keeping in-line with
brand colours.



Colour 1



Colour 2



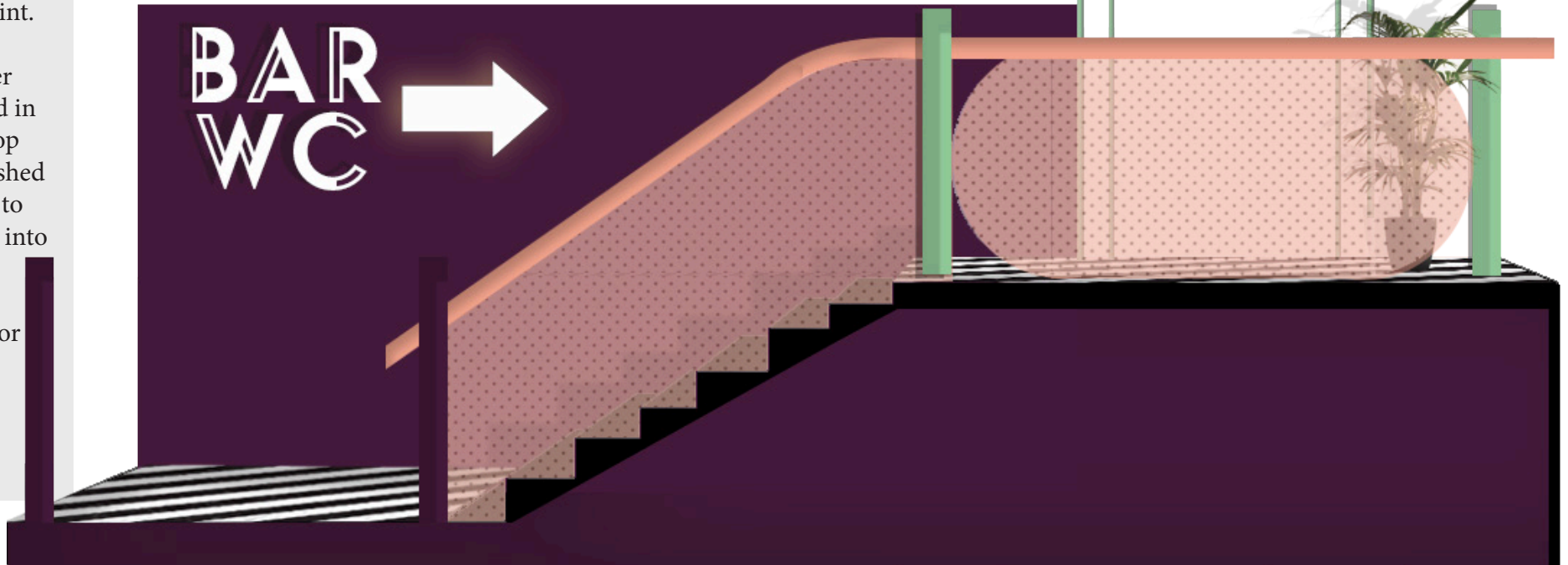
- Rounded metal
handrail for the staircase
to look fluid. Powder
coated in a gloss paint.

- Handrail for lower
treads to be finished in
brand purple, the top
treads handrail finished
in peach and green to
indicate the change into
the bar

- Black & white floor
tiles with painted
black treads

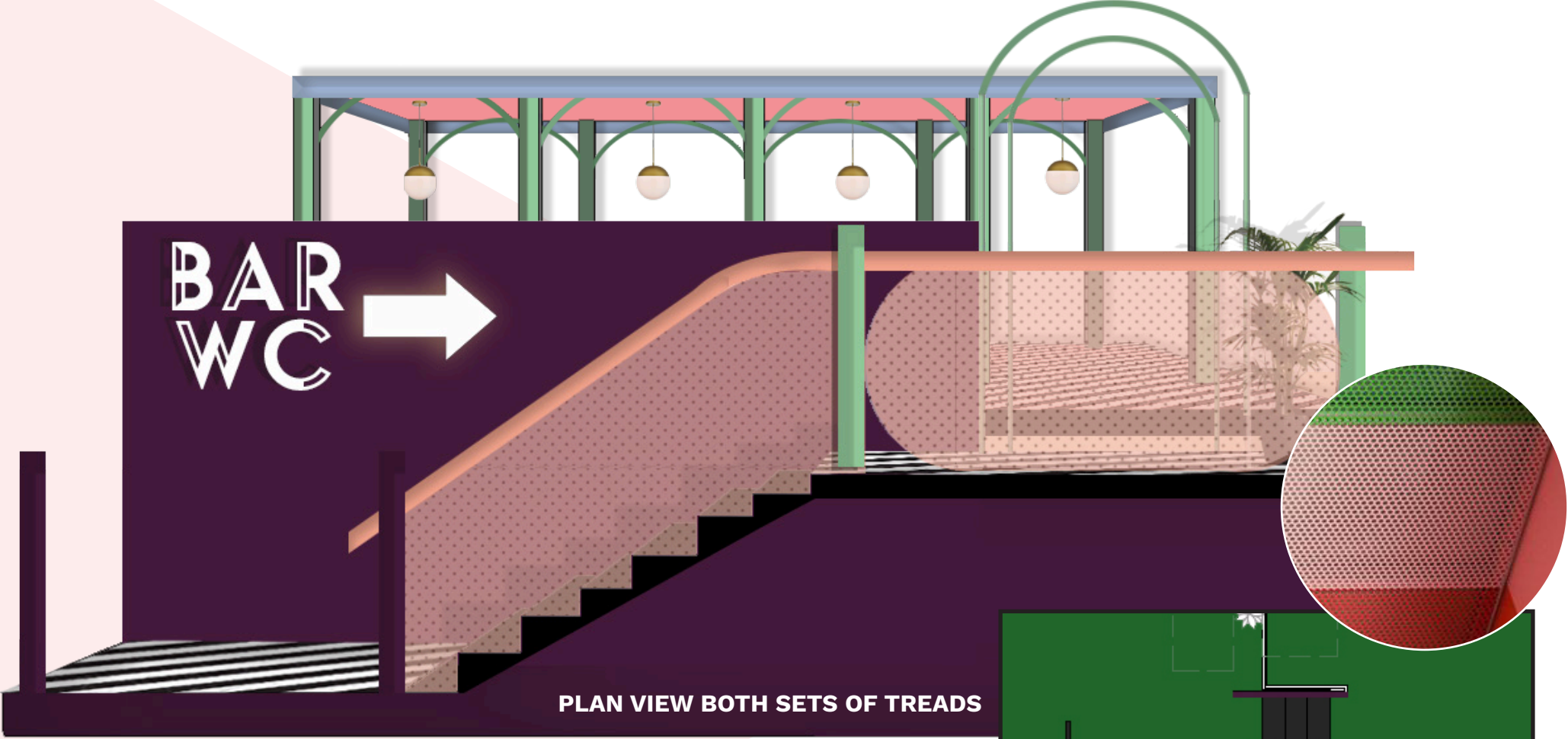
- Back-lit arrow

TOP SECTION OF STAIRCASE

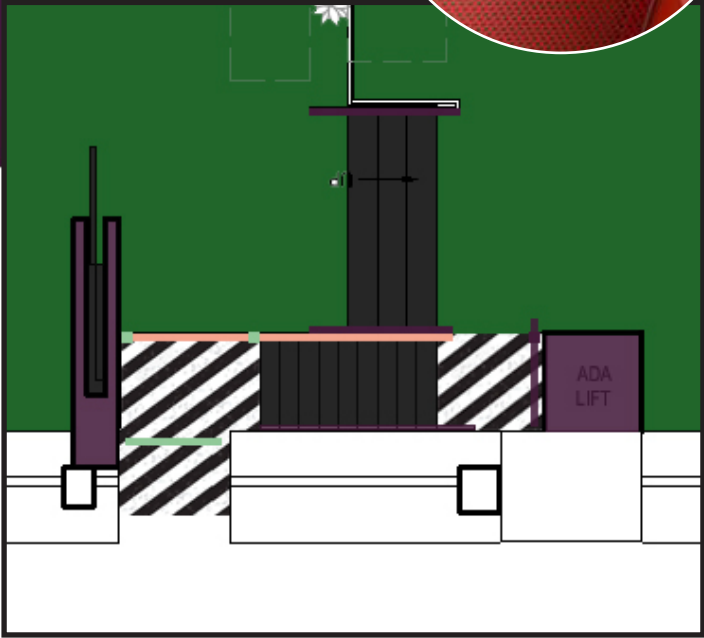
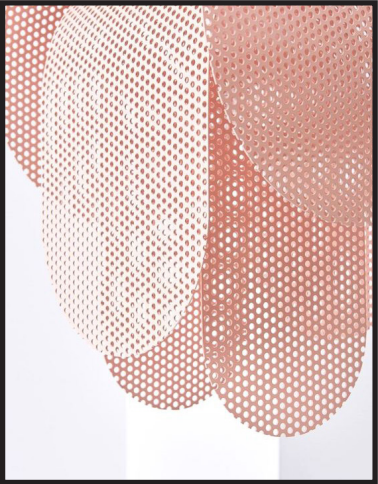


NOTE: NOT 100% TO SCALE/QUANTITY OF TREADS

CONCEPT ANGLE FOR IMPRESSION



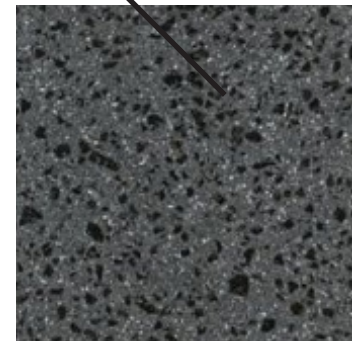
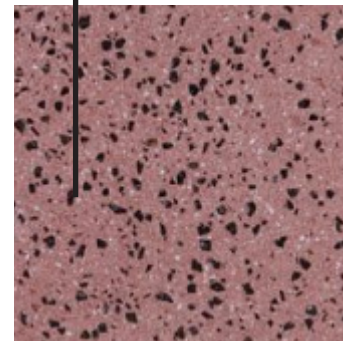
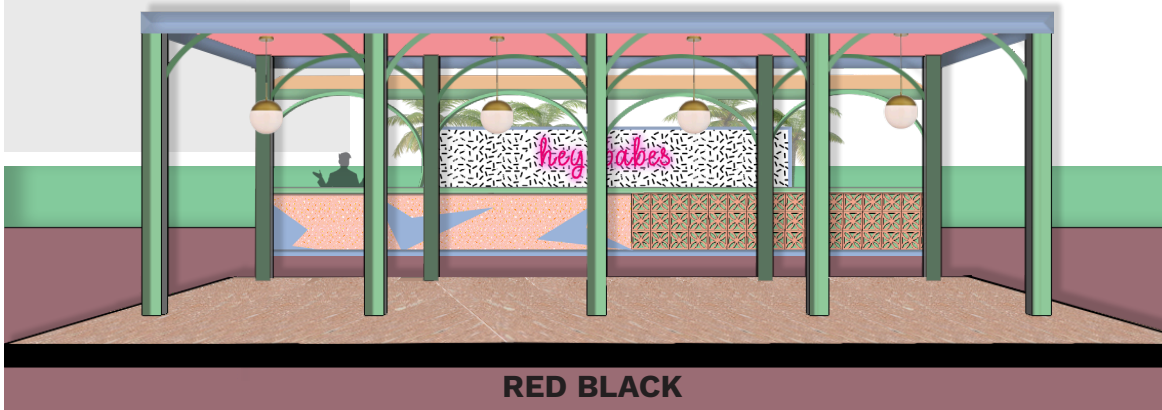
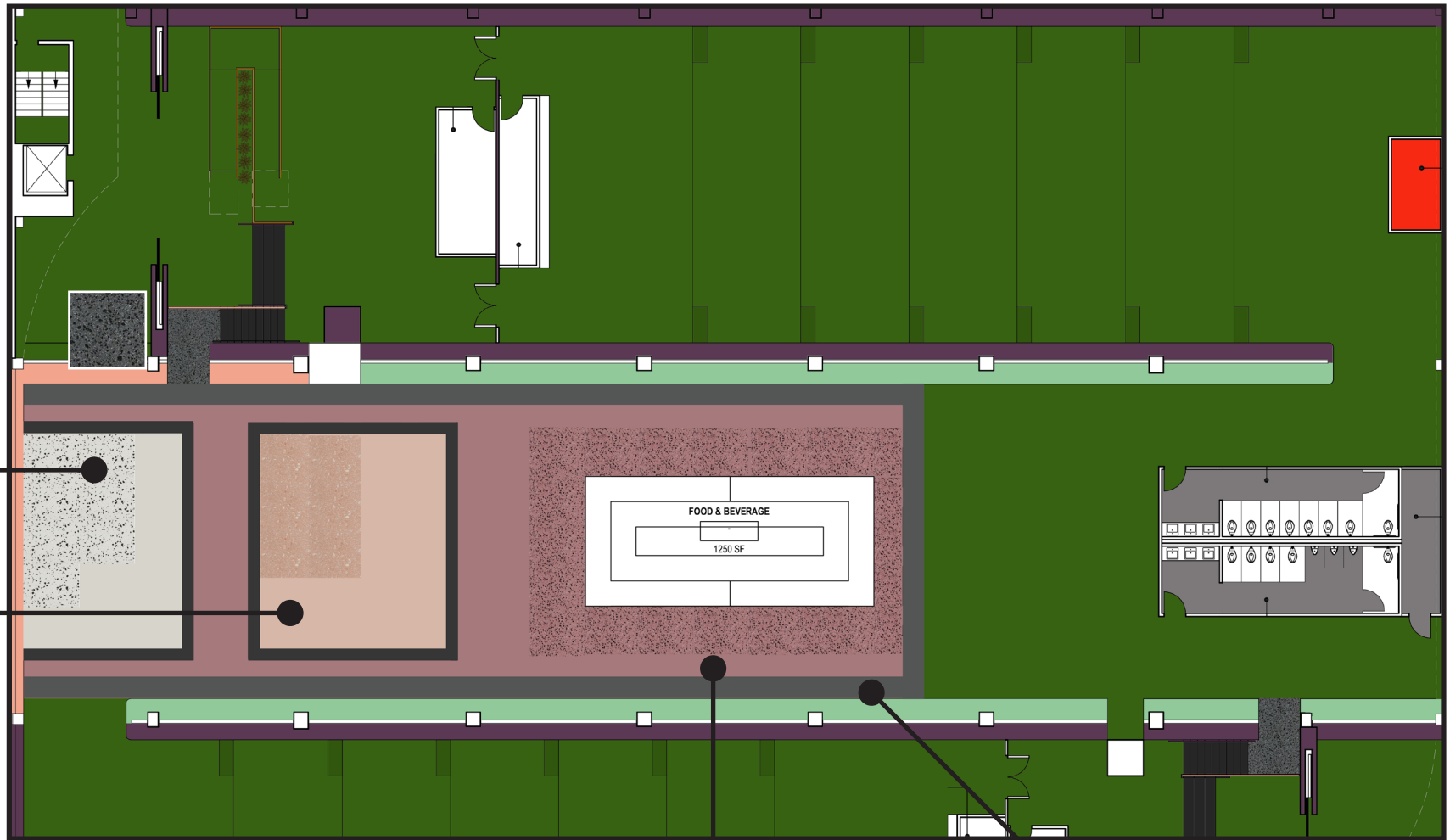
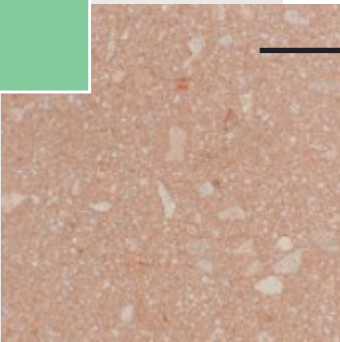
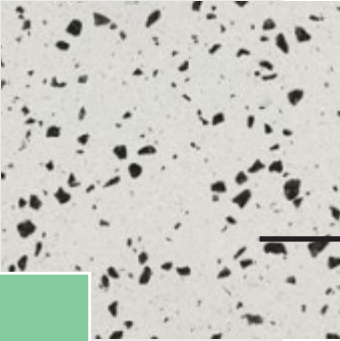
PLAN VIEW BOTH SETS OF TREADS



FLOORING

OPTION 1

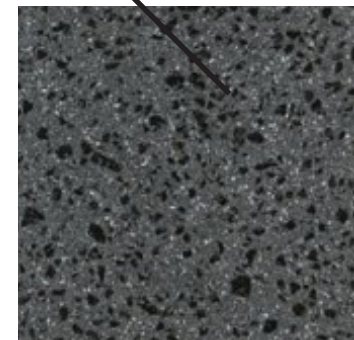
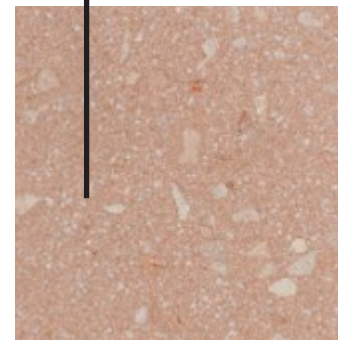
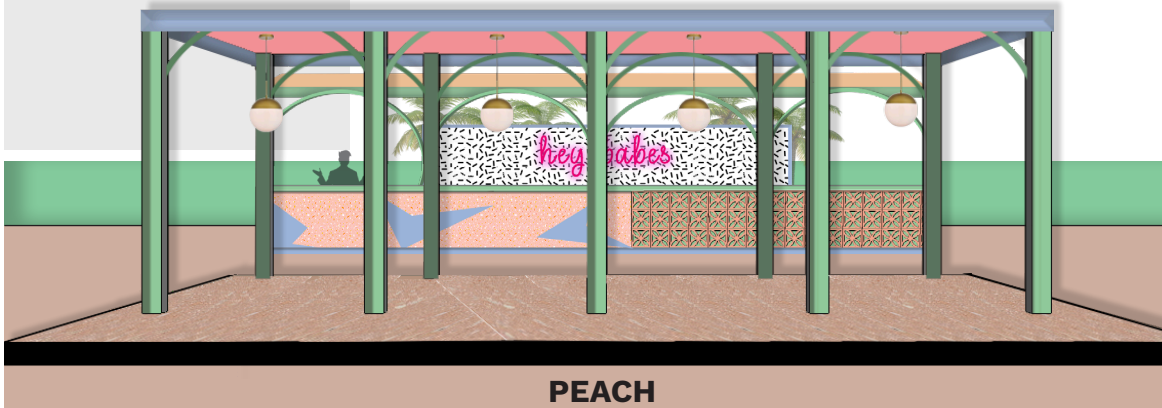
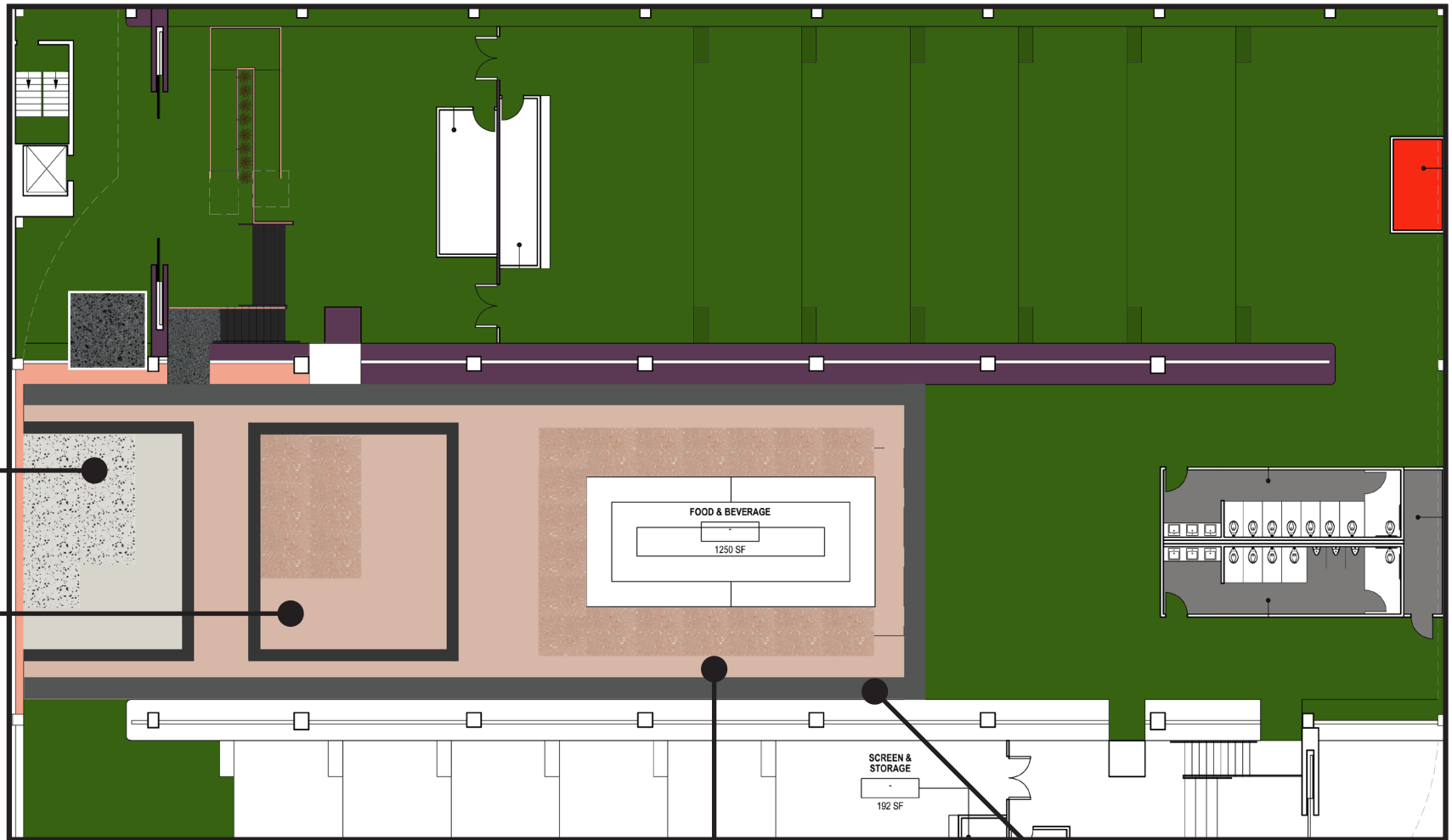
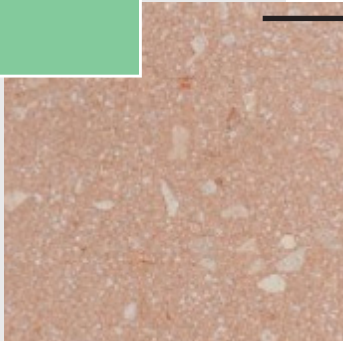
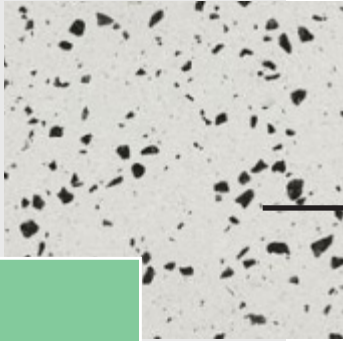
Using light weight paver tiles. Looking at the concrete Granite pavers in a variation of colours to create different zones



FLOORING

OPTION 2

(lighter colours) Using light weight paver tiles. Looking at the concrete Granite pavers in a variation of colours to create differnt zones

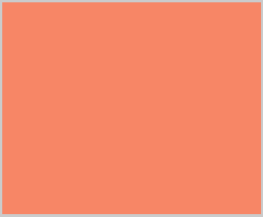


PERIMETER GUARDRAIL

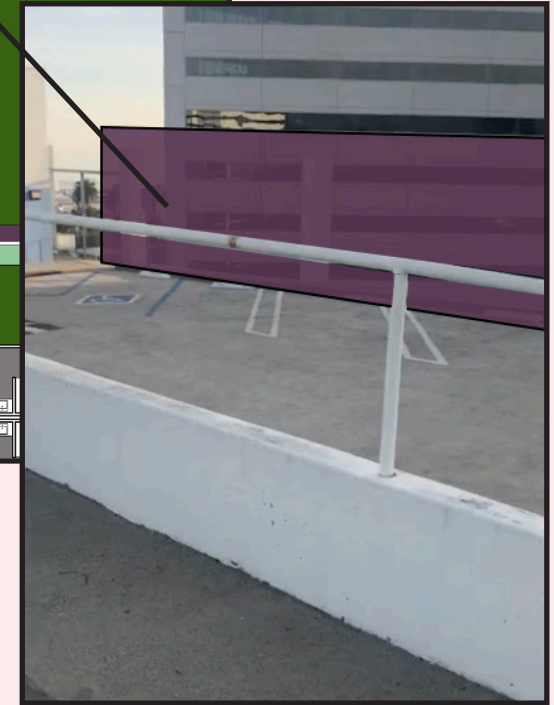
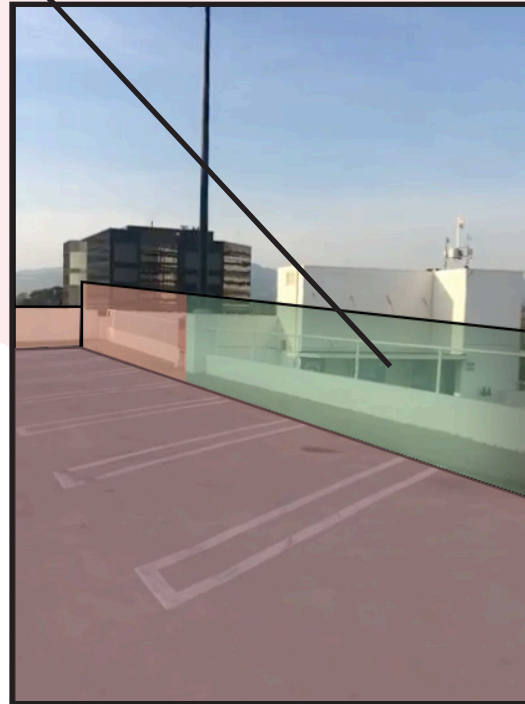
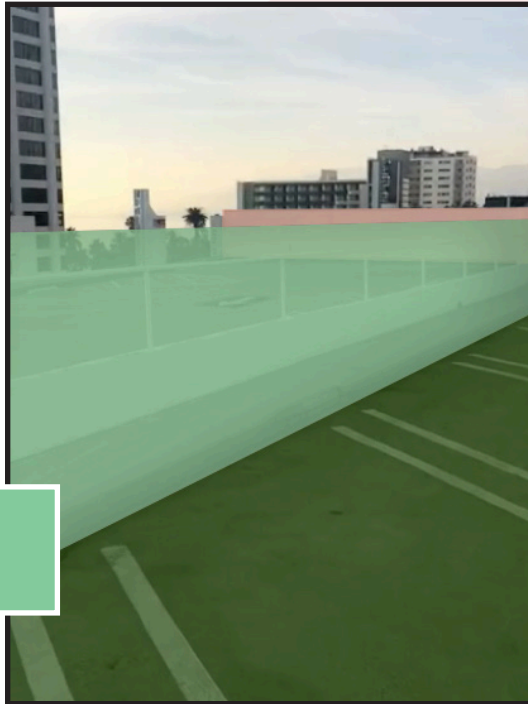
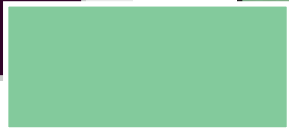
- Using brand and bar
colours to mask the
existing railing and
pavement



Colour 1



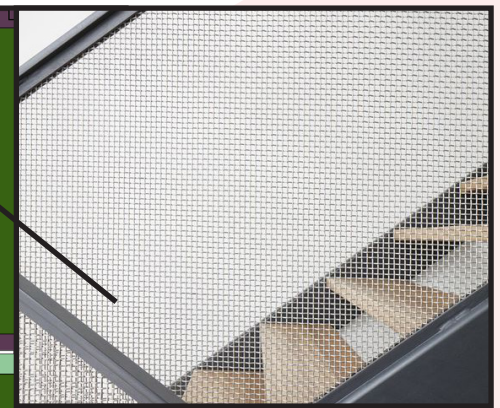
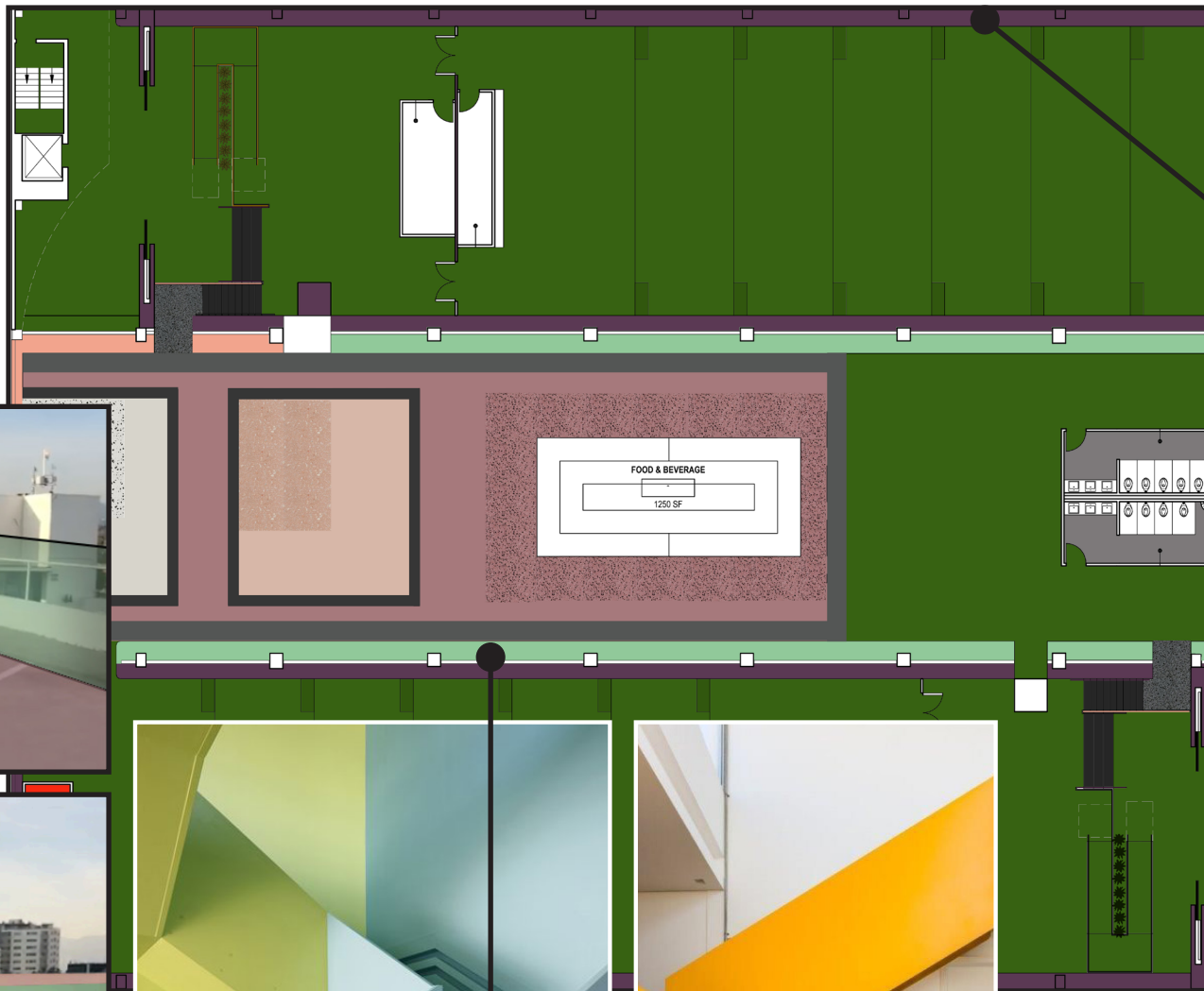
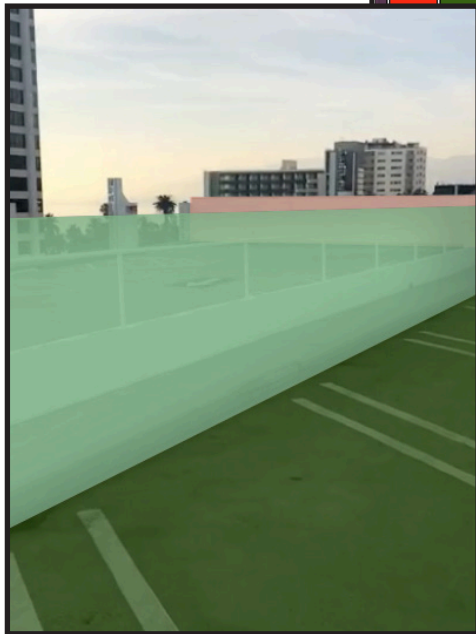
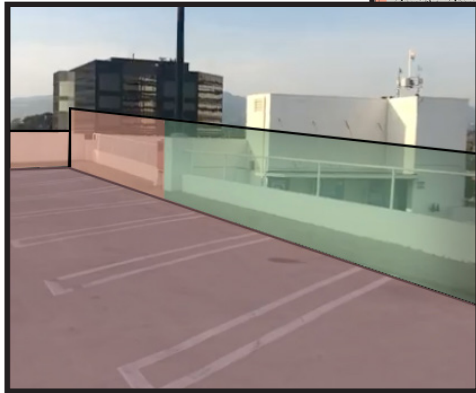
Colour 2



SPACE DIVIDING GUARD RAIL

- Metal guard rail, powder coated with a satin sheen

- Smooth, plastic look and feel



PERIMETER GUARD RAIL

- Thin mesh wire still allowing for the brand purple but not obscuring the view



RAMP & GUARDRAIL

- Using plants with tones of red, pink & purple e.g.. Cordyline Astralis, incorporating large green palms and bamboo to create a colourful forest

- Handrails and platform in brand colours

- Brass handrail with perforated/mesh guard in panels.



- Artificial Grass adhered to the ramp allowing it to blend in with the entrance flooring

- Purple cladding to the sides of the ramp, metal or timber